

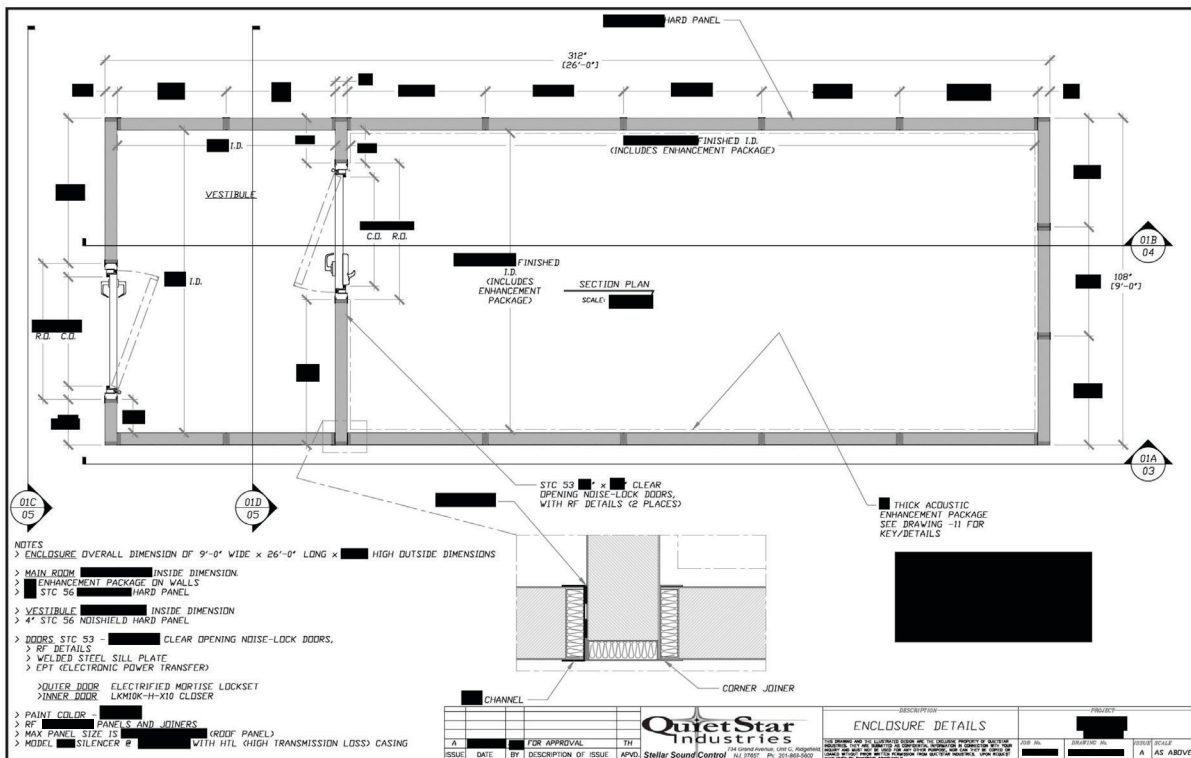


CASE STUDY

NUMBER ONE

CLIENT REQUIREMENTS

- 234 Square foot facility
- Vestibule / entry way
- ICD 705
 - Forced Entry
 - Acoustic Requirement
 - Tempest Requirement
- Architectural finish for executive appointment
- Construction (of shell) needed to be completed no longer than (12) weeks from award



OPPORTUNITY

IN THIS INSTANCE AN INTEGRATOR REACHED OUT TO QUIETSTAR WITH THE OPPORTUNITY. THEY ASKED QUIETSTAR TO PROVIDE:

- **IAC Acoustics Sentry® Secure Facility**
 - Panels & Joiners
 - Special RF/Tempest details on panels and joiners
 - Noise-Lock® Doors
 - Door hardware
 - Silencers – IAC 7S Silencers to allow 600cfm air exchange
 - **Lamvin Sonic Wall Finishes**
 - 1" Sonic Panels
 - Full height
 - Covering all walls
 - Ancorage Fabric
 - Magnets – to mount to the IAC panels with no penetration
 - **Sound Seal Probase 10mm Underlayment**
 - **Carpet**
 - **Steel Floor**
-

INTEGRATOR OPPORTUNITY

THE INTEGRATOR PROVIDED THE CLIENT:

- The Enclosure with QuietStar details
- Intrusion Detection System
- Communication / data
- Wave Guides
- Electrical
- Fire Suppression
- Project Management
- Installation / Construction
- Turn over / Representation through the accreditation process

RESULTS

QuietStar Secure worked closely with the ICD 705 Subject Matter Experts / Integrators to complete this project. The room tested to 60dB RF and NIC 52, exceeding the base requirements of 40dB RF and NIC 45. The client has a clear spanning space with good aesthetics and high performance.



Photos shown are not project specific

