

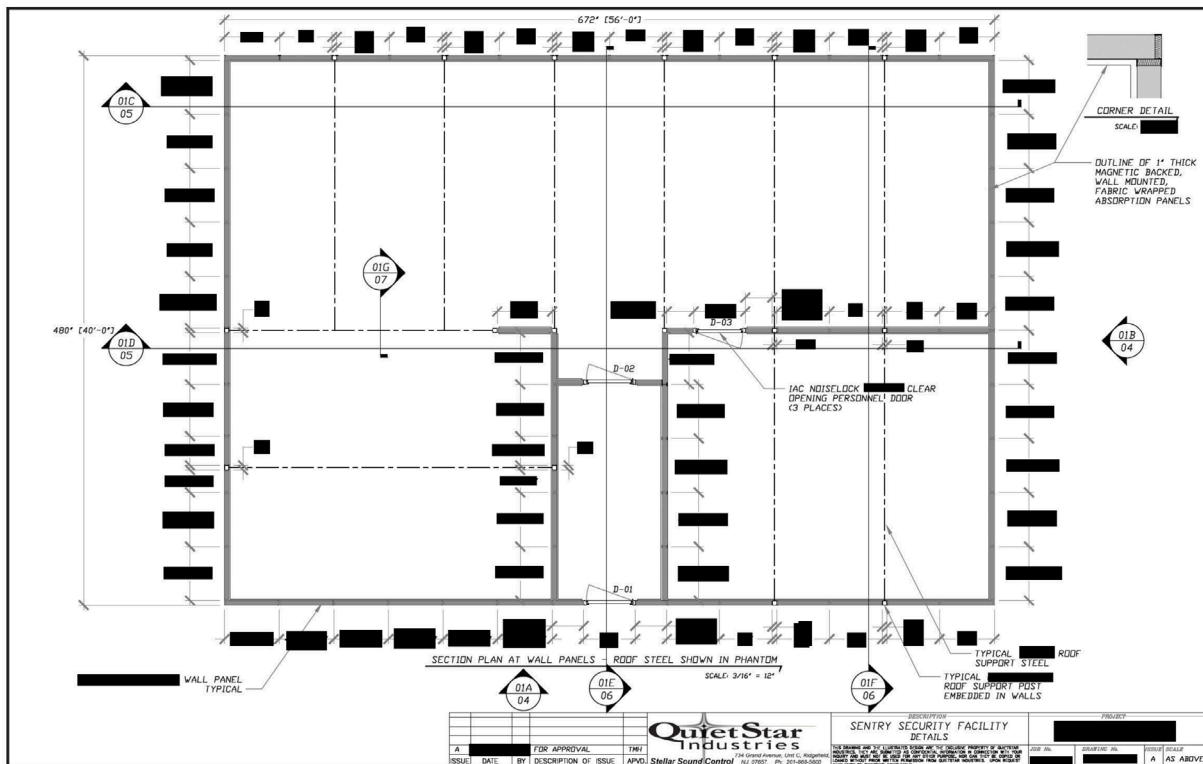


CASE STUDY

NUMBER TWO

CLIENT REQUIREMENTS

- 2,240 square foot facility
- Vestibule / entry way
- ICD 705
 - Forced Entry
 - Acoustic Requirement
 - Tempest Requirement
- Architectural finish for executive appointment
- Design requirements:
 - Exterior Enclosure
 - Roofing system
 - 186 MPH wind Rating (PE Stamp)
 - Seismic Requirements (PE Stamp)



OPPORTUNITY

IN THIS INSTANCE AN INTEGRATOR REACHED OUT TO QUIETSTAR WITH THE OPPORTUNITY. THEY ASKED QUIETSTAR TO PROVIDE:

- **IAC Acoustics Sentry® Secure Facility**
 - Panels & Joiners
 - Special RF/Tempest details on panels and joiners
 - Noise-Lock® Doors
 - Door hardware
 - **Lamvin Sonic Wall Finishes**
 - 1" Sonic Panels
 - Full height
 - Covering all walls
 - Guilford of Maine Anchorage Fabric
 - Magnets – to mount to the IAC panels with no penetration
-

INTEGRATOR OPPORTUNITY

THE INTEGRATOR PROVIDED THE CLIENT:

- The Enclosure with QuietStar details
- Intrusion Detection System
- Communication / data
- Wave Guides
- Electrical
- Fire Suppression
- Installation / Construction
- Turn over / Representation through the accreditation process

RESULTS

QuietStar Secure worked closely with the ICD 705 Subject Matter Experts / Integrators to complete this project. The room met all wind loading and seismic requirements and exceeded the base requirements of 40 dB RF and STC 50 (NIC 45). The client has a clear spanning space with good aesthetics and high performance.



Photos shown are not project specific

